

Instructions

To avoid any disturbance, please read the following instructions.

1. The Plastic-Shear cuts any kind of synthetic resin, laminated plastic materials, electric insulation material, floor coverings Asbestos-Hardfibre-Press-Chalk- and Card-Boards, Hornitex, PVC, Formica, Resopal, Inlaid, Linoleum and a great deal of similar materials dust-fuss and splinter free up to 5 mm ($\frac{3}{16}$ " in thickness).

2. No adjustments necessary for cutting various thicknesses.

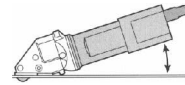
3. By overstraining the motor, the protective switch no. 10030 will Cut the electric Power Off. By pressing the red Button at the motor end cap pos. 86 no. 10043 the plastic-shear is in working Order again.

4. If cutting sheet-material, the side angle guide (a No. 13100) must be removed, by loosening two wing screws (No. 13200).

5. Never remove top angle guide (No. 13000).

6. With the side angle guide (No. 13100) assembled to the shear, projecting edges of glued an Formica, Veneer, Hardboard etc., can be perfectly Cut Off flush without splintering. Very important is, that the side angle guide (No. 13100) is assembled in that manner, that the knife while cutting doesn't Cut into the wood plate, otherwise the laminated plastic surface will Break.

7. While cutting, hold the shear upright, do not tilt or cant, so that the cutting jaws and the top angle guide (No. 13000) glides along the surface of the sheet.



8. Both knife and jaws can be resharpened. After being resharpened or replaced, the knife, at it's lowest point should protrude the jaws by approximately 3,5 mm ($\frac{9}{32}$ "). The knife should have approximately 0,1 mm (0,01 ") play on both side of the jaws, centering the Cutter with spacing shims (No. 12400) supplied.

9. The shear is of unit construction, making the replacement of spare Parts easy. Maintenance

10. Lubrication between knife (01002) and knife pin (12500) once a week with a few drops of oil.

11. Special accessory
For cutting strips 10-500 mm ($\frac{3}{8}$ -20") we supply as an optional an adjustable guide.

This guide can be supplied in lengths of 100 mm (4"), 250 mm (10") and 500 mm (20").
A metal box measurement 400 x 200 x 90 mm (16" x 8" x 3 $\frac{1}{2}$ ") is available for delivery.



Operating Instructions for the Plastic - Shear S1002N

To avoid any disturbance, please read the following instructions:

For your safety:



1 Safe operation of this machine is possible, only when the operating instructions and the safety precautions are read completely and the instructions contained therein are strictly observed.

2 The machine must not be used when damp and must not be operated in a wet environment.

3 Always inspect cable and plug before using machine. Have damage repaired by a qualified professional, only. Put the plug into the main socket only, when the machine is in off position.

4+5 Always wear protective goggles, protective gloves and heavy-duty shoes when working.

- Do not carry the machine by the cable.
- Always remove the plug from the power supply socket before carrying out any work on the machine, when interrupting work and when not using the machine.
- Always place the cable to the rear, away from the machine.
- Apply the machine to the sheet metal only, when switched on.
- Always provide for secure footing when working.
- Firmly clamp the work piece, if it dose not remain stationary from its own weight.
- The knife should not rub on the jaws: Possible danger of cutting tool breakage.
- Do not exceed the maximum allowable material thickness, especially when cutting over double folded joints, or welded seams.



For further notes on safety we refer to enclosed red safety instructions sheet

Environmental protection



Recycling raw materials instead of waste disposal

Machine, accessories and packaging should be sorted for environment-friendly recycling. These instructions are printed on recycling paper manufactured without chlorine.

Care and Maintenance



Before repairing or any maintenance on machine, disconnect from power supply by removing plug from socket.

Always keep the machine and the ventilation slots clean.

Oil the knife pin **18** and knife **11** at regular intervals.

If the machine should happen to fail, despite the care taken in manufacture and testing, repair should be carried out by an authorized customer services agent for Dräco power tools.

Declaration of conformity

We declare under our sole responsibility that this product is in conformity with the following standards.

EG 98/37 EG, EG 73/ 23 EG, EG 89/336 EG, or standardization documents EN 292 part I, EN 292 part II, EN 50 144, EN 55 014, EN 60 555, HD 400, HD 400.3 part II/H

CE 95 Max Draenert

Guarantee

Dräco tools carry a guarantee of 24 months from date of delivery.

Damage attributable to normal wear and tear, overload or improper handling will be excluded from the guarantee.

In case of complaint please send the machine, **undismantled**, to your dealer or the Dräco Service Centre for electric power tools.

Technical Data:

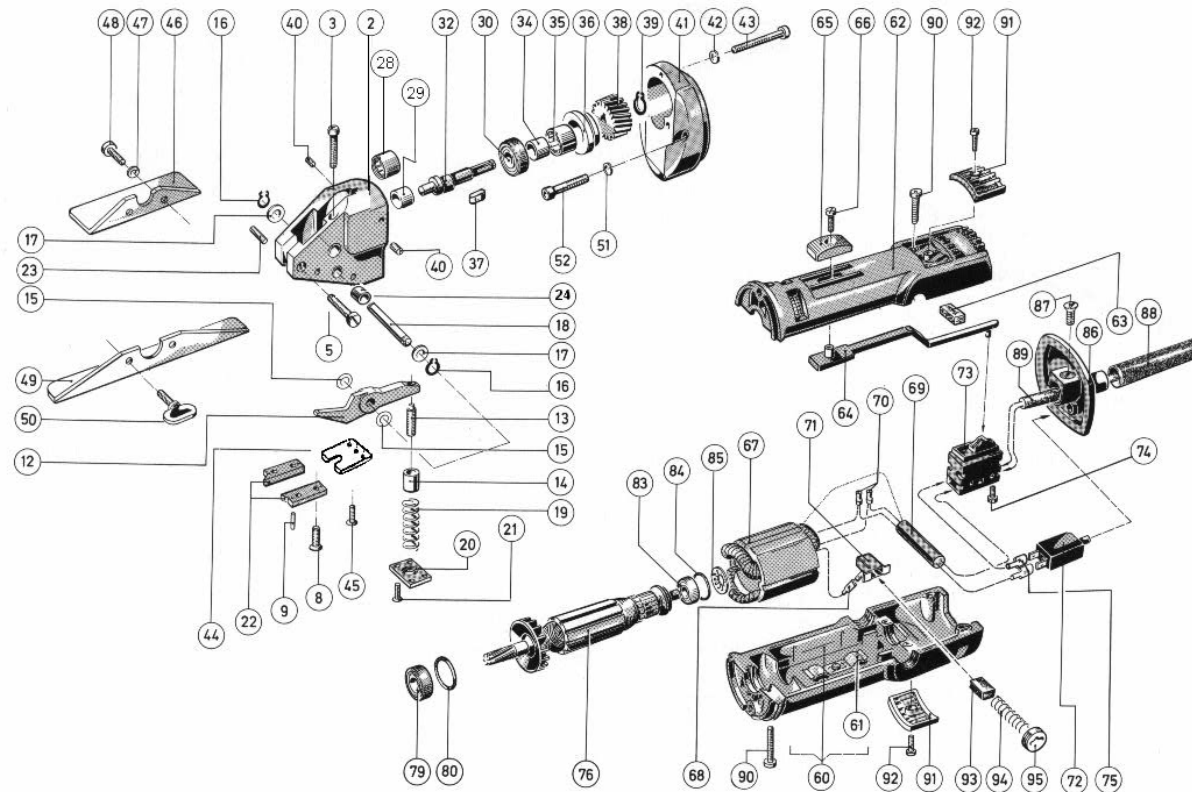
DRÄCO Plastic Shears	S1002N	S1002N	
max. cutting sapacity	Art.no. 61310	spare parts	
Board etc.	mm/ga 5,0	knife	01002
PVC, ABS, PP, etc.	mm/ga 3,0	Set of jaws	20600
Polyester, GFK, Formica, etc.	mm/ga 2,0	Knife-pin set	12555
		Optional accessories	
tightest radiuns	mm/" 175	metal-box	18000
working speed	m/min 6	adjustable guide S/02 up to 100 mm	20062
strokes	min ⁻¹ 3000	adjustable guide S/02 bis 250 mm	20063
Motor capacity	Watts 300	adjustable guide S/02 bis 500 mm	20064
weight	kg 1,6	set of blocks for corrugated plastics	BG20065

Max Draenert GmbH & Co.KG Electric - Cordless - Pneumatic Tools - Machines Germany
 Factory I : Administration D-73777 Deizisau P.O.Box 1120 Tel. **07153-8217-0**
 Production D-73779 Deizisau Gutenbergstrasse 15-17 Fax **07153-8217-66**

Internet <http://www.dracotools.com>

E-mail: draenert@dracotools.com

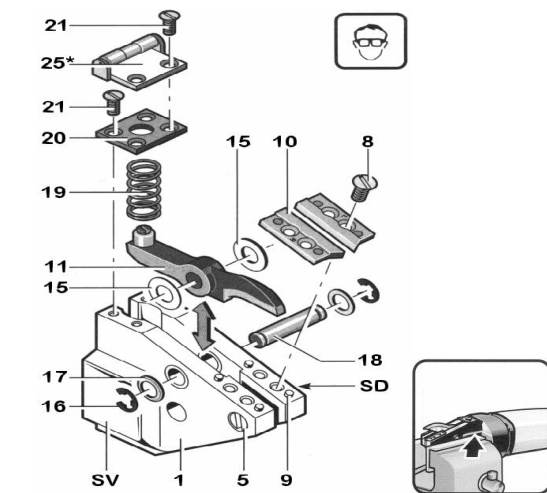
Spare parts for DRÄCO Plastic Shears S1002N



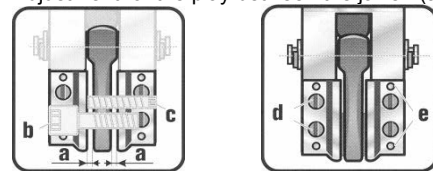
universal SERVICE TIPS

Before working on machine disconnect from power supply by removing plug from socket. Wear protective glasses!

- One drop of oil between knife (11) and head-casting (1) keeps the spacing shims (15) in place.
- Dismantle Spring cover (20) and take spring out (19).
- Take circlip (16) and washer (17) off.
- Push knife pin (18) out of casting.
- Take knife out of housing
- ⚠ Attention, do not exchange the spacing shims (15).
- Place the knife inside the housing feed shims in on one side and push knife pin (18) into housing up to the middle of the knife. Feed the shims on the other side of the knife.
- Push knife pin in completely, and secure washer (17) and circlip (16) again.
- Assemble spring (19) and spring cover (20).
- Between the knife (11) and the jaws (10) should be some distance, approximately 0,1 mm on each side. Knife (11) must be placed tight in the head casting.
- Adjustment for the play between the jaws. (a): 0,1 - 0,15 mm.



- If knife has contact with the jaws on both sides, adjust with screws in the head casting. If a burr is on the material, adjust the space between the knife and the jaws.



Spare parts for DRÄCO Plastic Shears S1002N

Pos. No.	Order No.	Description	Pcs.	Pos. No.	Order No.	Description	Pcs.
2-52	27300	Shearhead S1002N cpl. without Motor	1	60	10015	Motorcasing bottom without Endcap	1
2	20500	Head Casting S1002N	1	61	10016	Platespring	1
3	81263	Hex socket screw	1	62	10017	Motorcasing top	1
5	81272	Flat fillister head screw	1	63	10018	Rubber Insulation 8 mm	1
8	81286	Flat head screw	4	64	10019	Switch Lever	1
9	81248	Pin	4	65	10020	Switch Pad	1
		Knife for S1002N (cutting width: 4 mm)		66	10021	Flat Fillister Head Screw	1
12	01002	Knife 1002 standard	1	67	10022	Field 42 Volt	1
13+14	35566	Knife lock ring with adjustingscrew	1	67	10023	Field 115 Volt	1
15	BG12400	Spacing shims	1	67	10024	Field 230 Volt	1
16	81275	Circlip	2	67	10025	Field 240 Volt	1
17	81072	Washer	2	69	10027	Condensator	1
18	12500	Knife pin	1	70	10028	Wire Endcap	2
15-18	BG12555	Knife pin set Pos. 15-18	1	71	10029	Carbon Brush Holder	2
19	12200	Spring	1	72	10030	Motor Protective Switch	1
19-21	BG12300	Spring cover Pos. 19-21	1	73	10031	Switch	1
20	12300	Spring cover	1	74	10032	Fillister Head Screw	2
21	81285	Flat head screw	4	75	10033	Connection Wire	1
22	20600	Set of jaws for S1002N	1	76	10034	Armature 42 Volt	1
22	BG20600	Jaws for S1002N SET Pos.8, 9, 22	1	76	10035	Armature 115 Volt	1
23	21600	Spacing setscrew	1	76	10036	Armature 230 Volt	1
24	17900	Knife pin bushing Ø 10 mm	2	76	10037	Armature 240 Volt	1
24	17911	Knife pin bushing Ø 11 mm (oversize for repair)	2	79	10038	Ball Bearing	1
29	BG27200	Gear cpl. Pos. 29-39	1	80	10039	Rubberring AS	1
28	10300	Needle bearing	1	83	10040	Ballbearing	1
29	10005	Sleeve	1	84	10041	Rubberring Bs	1
30	10200	Ball bearing	1	85	10042	Loading Spring	1
32	10004	Excentric shaft	1	86	10043	Motor Endcap	1
34	10005	Sleeve	1	87	10044	Plastic Cord Clamp Screw	1
35	10300	Needle bearing	1	88	10045	Rubber-Sleeve	1
35-36	10450	Cap for needle bearing	1	89	32046	Cable with Plug Europe	1
37	10006	Key	1	90	10047	Metal-Screw	6
38	10007	Gear	1	91	10048	Filtercap	2
39	10009	Circlip	1	92	10049	Round Head Screw	2
40	81239	Tap screw	2	93	10050	Carbon Brush without Carbon Spring	2
41	10010	Gear case	1	94	10051	Carbon Spring	2
42	81249	Securing washer	3	95	10052	Carbon Cap Screw	2
43	81012	Flat fillister head screw	3	60-95	10053	Motor cpl. 42 Volt	1
44	18600	Aluminium Cover Plate	1	60-95	10054	Motor cpl. 115 Volt	1
45	81285	Flat Head Screw	4	60-95	10055	Motor cpl. 230 Volt	1
46	13000	Top Angle Guide	1	60-95	10056	Motor cpl. 240 Volt	1
47	81035	Washer	2			Accessories	
48	81039	Flat Head Screw	2			10059	Adjustable guide S/01 100 mm
49	13100	Side Angle Guide	2			10060	Adjustable guide S/01 250 mm
50	13200	Wing Screw	2			10061	Adjustable guide S/01 500 mm
51	81243	Securing washer	2			18000	Metal Box
52	81181	Hex socket screw	2				

Specifications are subject to change for improvement without prior notice. When ordering spares, please mention order number and voltage.

Max Draenert GmbH & Co.KG Electric - Cordless - Pneumatic Tools - Machines Germany

Factory I : Administration
Production

D-73777 Deizisau
D-73779 Deizisau

P.O.Box 1120
Gutenbergstrasse 15-17
Tel. 07153-8217-0
Fax 07153-8217-66

Internet <http://www.dracotools.com>

E-mail: draenert@dracotools.com

* optional