

Operating Instructions for the metal-shear SD5 and S1001N

To avoid any disturbance please read the following instructions:

For your safety:



1 Safe operation of this machine is possible only when the operating instructions and the safety precautions are read completely and the instructions contained therein are strictly observed.

2 The machine must not be used when damp and must not be operated in a wet environment.

3 Always inspect cable and plug before using machine. Only have damage repaired by a qualified professional. Put the plug into the mains socket only when the machine is switched off.

4+5 Always wears protective goggles, protective gloves and heavy-duty shoes when working.

- Do not carry the machine by the cable.
- Always remove the plug from the power supply socket before carrying out any work on the machine, when interrupting work and when not using the machine.
- Always place the cable to the rear away from the machine.
- Apply the machine to the sheet metal only when switched on.
- Always provide for secure footing when working.
- Firmly clamp the work piece if it dose not remain stationary from its own weight.
- The knife should not rub on the jaws: Possible danger of cutting tool breakage.
- Do not exceed the maximum allowable material thickness especially when cutting over doublers, folded joints or welded seams.

📄 For further notes on safety refer to enclosed sheet

Technical Data:

DRÄCO metal shears	type	SD5	S1001N
max. cutting capacity	Art.no.:	61000	61010
steel	400 N/mm ² mm/ga.	1,0 / 19	1,3 / 18
stainless steel	600 N/mm ² mm/ga.	0,7 / 21	1,0 / 19
stainless steel	800 N/mm ² mm/ga.	0,4 / 24	0,7 / 21
aluminium	250 N/mm ² mm/ga.	1,5 / 16	2,0 / 14
tightest radius	mm/ "	50 / 2	100 / 4
working speed	±m/min	9	9
strokes	min ⁻¹	3000	3000
motor capacity	W	200	200
weight	kg	1,6	1,6

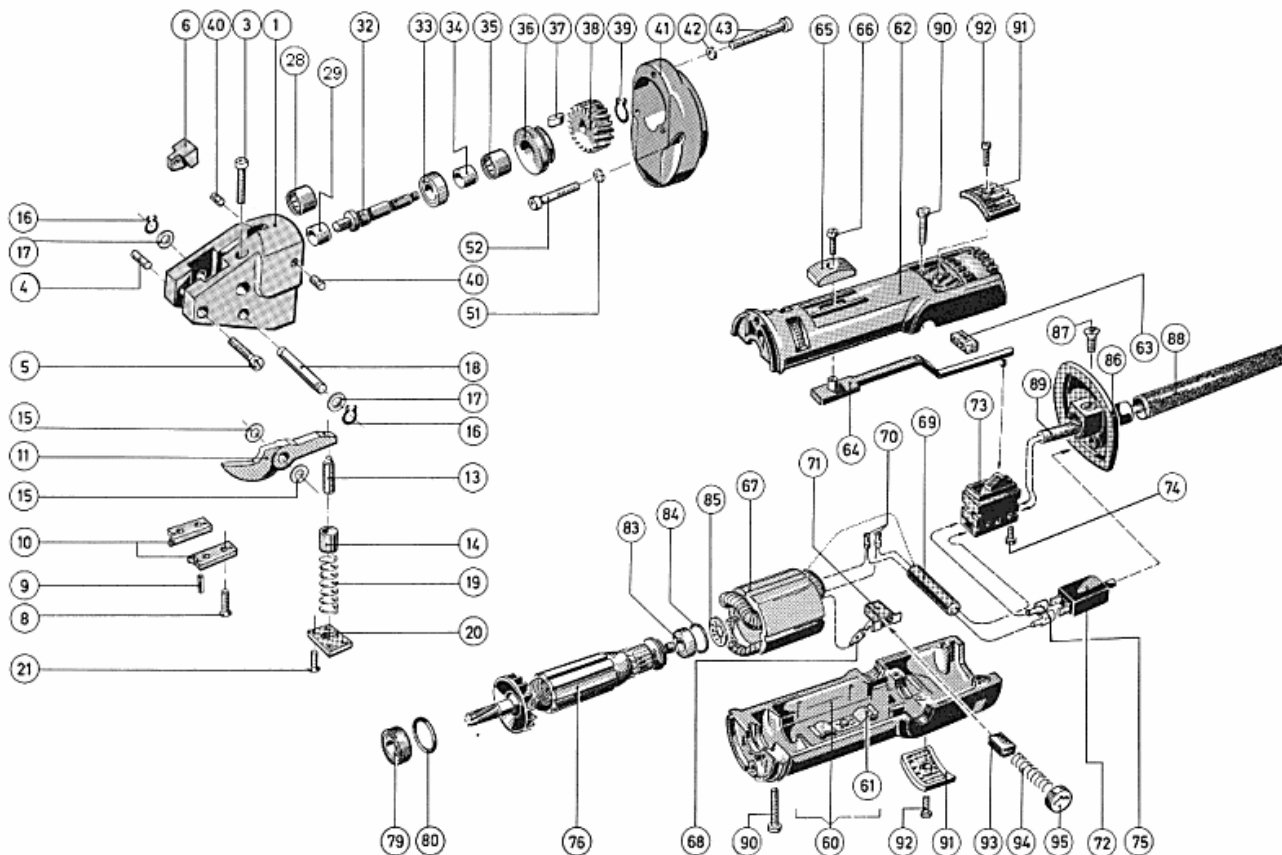
SD5		S1001N	
spare parts		spare parts	
knife	01011	knife	01001
set of jaws	BG13574/1	set of jaws	BG10600
knife-pin set	BG12555	knife-pin set	BG12555
optional accessories			
metal-box			18000
adjustable guide S/01	up to 100 mm		10059
adjustable guide S/01	up to 250 mm		10060
adjustable guide S/01	up to 500 mm		10061
support roller			BG10076

all units are ready to use

BG=Set

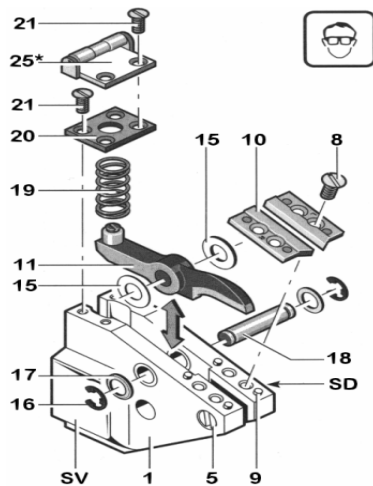
other voltages available

Spare parts for SD5 & S1001N



Replacing/Adjusting the Knife

Before working on machine disconnect from power supply by removing plug from socket. Wear protective glasses!



Loosen the screws 15. Remove the support roller 11. Unscrew the screws 16 and remove the spring plate 10. Remove the spring 17. Remove the Circlip ring 9 and screw 7. Push back the knife pin 8.



Do not interchange the spacers 18: The jaws and knife could be ruined by the wrong spacing.

Insert a new knife with the old spacers 18. Insert the knife pin 8. Mount the washer the 7 and the Circlip ring 9.

Insert the spring 17. Reassemble spring plate 10 and support roller 11.

Replacing the Jaws

Loosen the screws 19 and remove the jaws 6. Press out the positioning pins 10. Mount new jaws and positioning pins. Tighten the screws 19.

Adjusting the knife Clearance

For clearance between knife and jaws that is too large, loosen the fillister head screw 4. Adjust the clearance with the set screw 3. Retighten the fillister head screw 4.



The knife must not rub on the jaws: Danger of breakage.

Note: If heavy burring is produced while cutting, repeat the adjustment.

Replacing the Knife

Clamp the machine in a vice on the clamping surfaces 12 between aluminium protective jaws.

Before working on machine disconnect from power supply by removing plug from socket. Wear protective glasses!

Sharpening the knife/Jaws

The knife and the jaws must be sharpened and adjusted at the same time. This work should be performed by an authorised Dräco customer service location. Send in the complete machine for this purpose.

Spare parts for SD5 & S1001N

Pos. No.	Order No.	Description	Quantity per Shear	Pos. No.	Order No.	Description	Quantity per Shear
1	BG10500	Head casting	1	42	81249	Securing washer	3
1-52	10057	Shearhead S1001N cpl. assembled, without motor	1	43	81012	Flat fillister head screw	3
1-52	10557	Shearhead SD5 cpl. assembled, without motor	1	51	81243	Securing washer	2
3	81263	Hex socket screw	1	52	81181	Hex socket screw	2
4	81089	Spacing-block set screw	1	53	10531	Holder for switch	1
5	81272	Flat fillister head screw	1	54	15531	Screw	1
6	BG10002	Spacing Block	1	53-95	10055	Motor cpl. 230 V	1
8	81286	Flat Head Screw	4	60	10015	Motorcase bottom	1
9	81248	Pin	4	60 a	10515	Endcap case bottom	1
Knife for S1001N (width: 4 mm)				61	10016	Platespring	1
11-14	01001	Knife 1001 Standard up to 1,3 mm	1	62	10017	Motorcase top	1
	01001W	Knife 1001 HM	1	63	10018	Rubber insulation	1
	10111	Curve knife 1001/01 up to 0,75 mm	1	64	10019	Switch lever	1
				65	10020	Switch pad	1
10	10600	Set of Jaws 1001 Standard	1	66	10021	Flat fillister head screw	1
8-10	BG10600	Set of Jaws 1001 incl. screws&pins	1	67	10024	Field 230 Volt	1
	10600W	Set of jaws 1001 HM	1	69	10027	Condensator	1
Knife for SD5 (width: 5 mm !)				70	10028	Wire end cap	1
11-14	01011	Knife for SD5 up to 1 mm	1	71	10029	Carbon brush holder	2
10	13574/1	Set of jaws SD 5	1	72	10030	Motor protective switch	1
8-10	BG13574/1	Set of jaws SD 5 incl. screws&pins	1	73	10031	Switch 2-polig	1
				74	10032	Fillister head screw	4
13-14	35566	Knife Lockring with Adjusting Screw	1	75	10033	Connection wire	1
				76	10036	Armature 230 Volt	1
15	BG12400	Spacing shims	1	79	10038	Ball bearing	1
16	81275	Circlip	2	80	10039	Rubber ring	1
17	81072	Washer	2	83	10040	Ball bearing	1
16-18	12500	Knife pin	1	84	10041	Rubber ring	1
15-18	12555	Knife pin set (Pos. 15-18)	1	85	10042	Spring washer	1
19	12200	Spring	1	86	10043	Motor end cap	1
20	12300	Spring cover	1	87	10044	Plastic cord clamp screw	1
21	81271	Flat head screw M 3 x 8	4	88	10045	Rubber-sleeve	1
24	17900	Knifepin bushing Ø 10 mm	2	89	32046	cabl with plug	1
24	17911	Knifepin bushing Ø 11 mm	(2)	90	10047	Metal-screw	6
25	BG10076	Support roller in metal	1	91	10048	Filter cap	2
32-39	BG10058	Drive Shaft cpl. assembled	1	92	10049	Round-head screw	2
32	BG10004	Eccentric drive shaft	1	93	10050	Carbon brush	2
33	10250	Ballbearing	1	94	10051	Carbon spring	2
34	10005	Sleeve	2	95	10052	Carbon cap screw	2
35	10300	Needle bearing	2				
36	10450	Cap for needle bearing	1				
37	10006	Key	1				
38	10007	Gear	1				
39	10009	Circlip	1				
40	81239	Tap screw	2				
41	BG10010	Gearcase	1				
				optional assessories			
				10059	adjustable guide S/01 100 mm		
				10060	adjustable guide S/01 250 mm		
				10061	adjustable guide S/01 500 mm		
				18000	support roller (metal)		

Specifications are subject to change for improvement without prior notice.

Max Draenert GmbH & Co.KG Electric - Cordless - Pneumatic Tools - Machines Germany

Factory I: **Administration**
Production

D-73777 Deizisau
D-73779 Deizisau

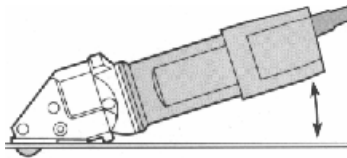
P.O.Box 1120 Tel. **+49-7153-8217-0**
Gutenbergstreet 15-17 Fax **+49-7153-8217-66**

Internet <http://www.dracotools.com>

E-mail: draenert@dracotools.com

Dealer address:

Operating instructions



The material to be cut must always be free of oil or grease.

Always place the machine flat on the work piece.

Cut-outs: Drill a starting hole with a 12-14 mm diameter drill.

Circular cuts: Always cut counter clockwise and from left to right.

Care and Maintenance



Before working on machine disconnect from power supply by removing plug from socket.

Always keep the machine and the ventilation slots clean.

Oil the knife pin **8** and knife **5** at regular intervals.

If the machine should happen to fail despite the care taken in manufacture and testing, repair should be carried out by an authorised customer service agent for Dräco power tools.

Warning!

Important instructions for connecting a new 3-pin plug to the 2 wire cable.

The wires in the cable are coloured according to the following code

live = brown



To be fitted by qualified professional only

neutral = blue

Do **not** connect the blue or brown wire to the earth terminal of the plug.

Important

If for any reason the plug is cut off of the cable of this machine, it must be disposed of safely and not left unattended.

Declaration of conformity

We declare under our sole responsibility that this product is in conformity with the following standards or standardisation documents:

EG 98/37 EG, EG 73/ 23 EG, EG 89/336 EG, EN 292 part I, EN 292 part II, EN 50 144, EN 55 014, EN 60 555, HD 400, HD 400.3 part II/H

CE 95

A handwritten signature in black ink, appearing to read 'Max Draenert', written over a light-colored background.

CE 95 Max Draenert

Guarantee

Dräco tools carry a guarantee of 6 months from date of delivery.

Damage attributable to normal wear and tear, overload or improper handling will be excluded from the guarantee.

In case of complaint please send the machine, **undismantled**, to your dealer or the Dräco Service Centre for electric power tools.

Environmental protection



Recycling raw materials instead of waste disposal

Machine, accessories and packaging should be sorted for environment-friendly recycling.

These instructions are printed on recycling paper manufactured without chlorine